



5 Curriefield View

, Cleland, ML1 5GQ

£1,950 Per month

AVAILABLE NOW, AN IMMACULATE AND UNFURNISHED FOUR BEDROOM DETACHED VILLA

This stunning, rarely available property oozes quality. The interior is immaculate throughout and would suit professional individuals.

Comprising welcoming entrance hallway, fantastic modern fitted dining kitchen with appliances, generous sized lounge, conservatory and downstairs wc. The upper level comprises of bright and spacious master bedroom with walk in wardrobe and ensuite, three further well proportioned bedrooms (all with built in wardrobes and bedroom two with en suite) and a family four piece bathroom.

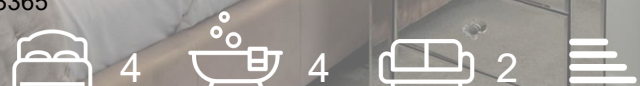
Features include gas central heating, double glazing, integrated garage, driveway and lovely landscaped private gardens to front side and rear.

EPC C
Council Tax Banding E
LR LARN1812008
530223/320/09092

Viewing

Please contact our Pomphreys Properties Ltd Office on 01698373365 if you wish to arrange a viewing appointment for this property or require further information.

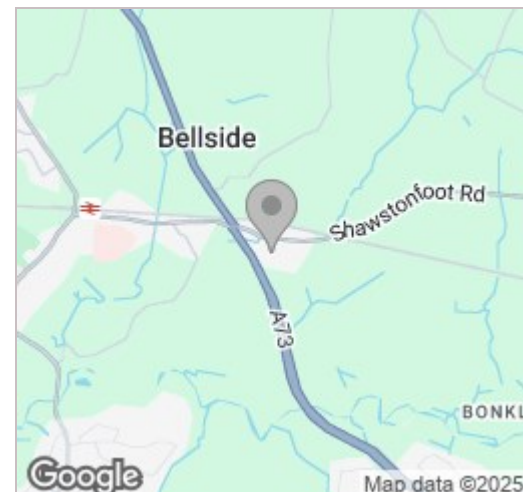
- Stunning Detached Villa
- Unfurnished, cul de sac sited
- Four Bedrooms
- Master En Suite with Walk In Wardrobe
- Fantastic dining kitchen
- Conservatory
- Landscaped Gardens to front side and rear
- Driveway and Garage



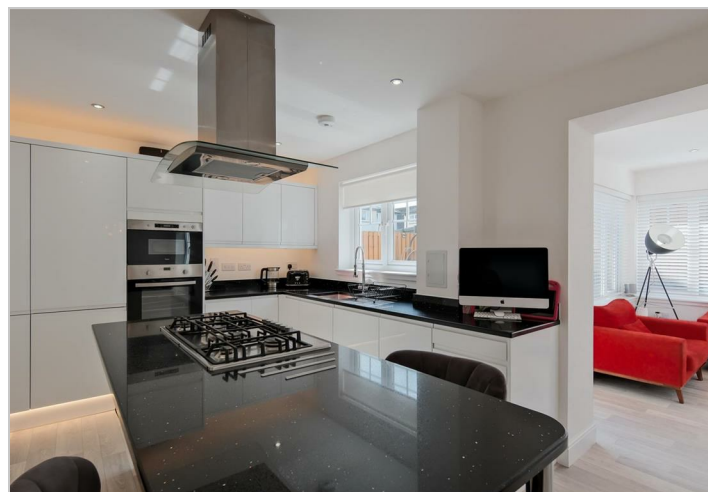
Floor Plan



Area Map



Energy Efficiency Graph



These particulars, whilst believed to be accurate are set out as a general outline only for guidance and do not constitute any part of an offer or contract. Intending purchasers should not rely on them as statements of representation of fact, but must satisfy themselves by inspection or otherwise as to their accuracy. No person in this firm's employment has the authority to make or give any representation or warranty in respect of the property.

36 Hill Street, Town Centre, Wishaw, North Lanarkshire, ML2 7AT
Tel: 01698373365 **Email:** amc@pomphreyslaw.com **www.pomphreyslaw.com**